

# 56 DAY BED

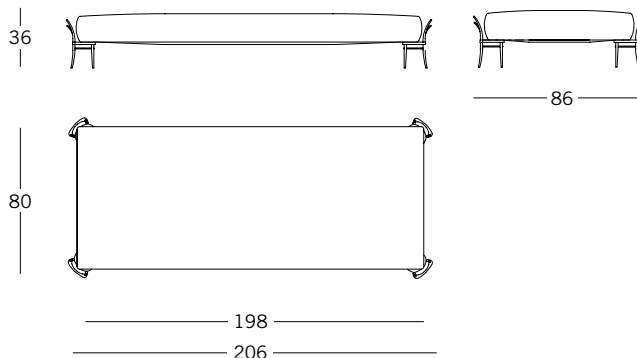
RON GILAD

## Letto

Seduta con imbottitura in poliuretano a portanza differenziata e rivestimento inamovibile. Sedie in miniature realizzate in acciaio modellato artigianalmente, saldato e verniciato, costituiscono i piedi della seduta.

## Day-bed

Polyurethane padded seat for differing loads, with non-removable cover. Little chair, made of steel and moulded by hand, welded and varnished, are used as the feet of the seat.



## MATERIALI

### VERNICIATURE METALLI PAINTED METAL



NERO  
BLACK  
RAL 9004

## TESSUTI

CALIPSO CAT. A  
61% COTONE  
30% VISCOSA  
9% POLIESTERE



MATTONE 13



VERDE 18



BLU 25



SABBIA 29



CIPRIA 35

56 DAY BED

## TESSUTI

VELVET  
100% CO

CAT. B



VEL-01 MELANZANA



VEL-02 ORO



VEL-03 SALVIA



VEL-04 FUCSIA



VEL-05 CASTAGNO



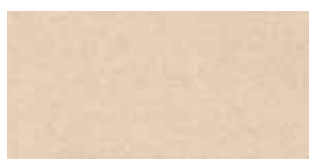
VEL-06 PAPRIKA



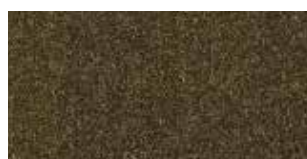
VEL-07 CERULEO

LARIO  
100% CO

CAT. C



SABBIA 01



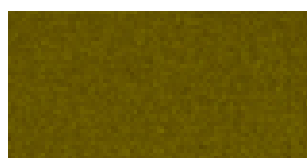
CASTORO 02



MATTONE 03



BECCO D'OCA 04



OROVECCHIO 05



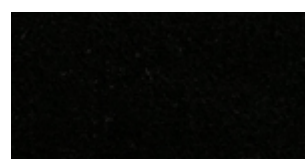
BOSCO 06



BLU 07



INDACO 08



NERO 00

## 56 DAY BED

## TESSUTI

CRAGGAN CAT. C  
100% PURE NEW WOOL

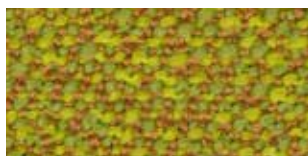


GRIGIO/GIALLO 08



GRIGIO/TURCHESE 06

SERA CAT. C  
94% WV  
6% PA



VERDE 23

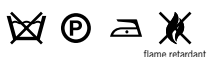


MANDORLA 02



ARANCIO 20

SOLO CAT. C  
95% WV  
5% PA



CURRY 11



WALNUT 23

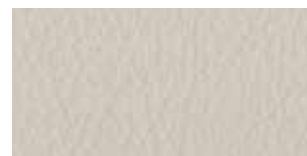
PELLE CAT. P  
PELLE PIENO FIORE SEMI-ANILINA  
SEMI-ANILINE FULL GRAIN LEATHER



COGNAC 52



NERO 51



MANDORLA 73



INDACO 27

TESSUTO CLIENTE  
CUSTOMER'S FABRIC